

deptus mechanicus departamento manufacturum

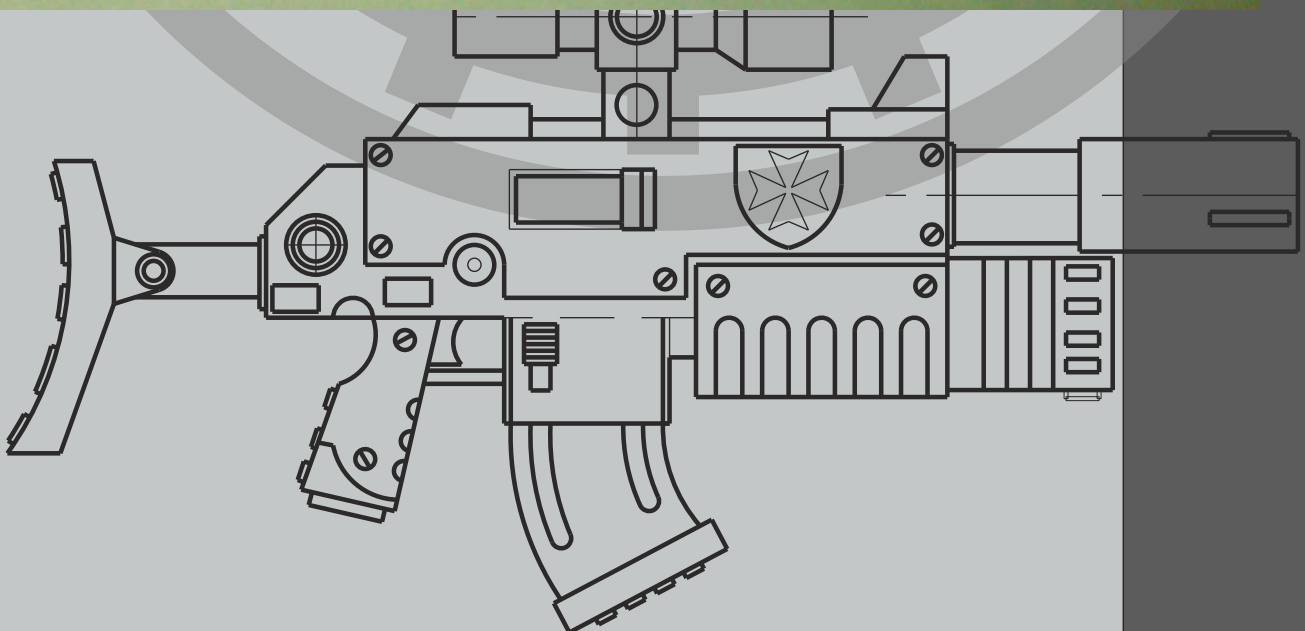
Ordo Reductor; sse2009

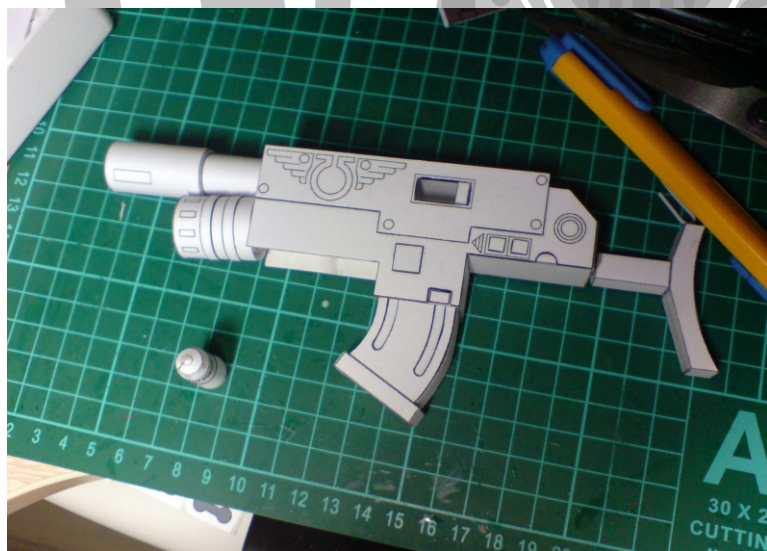
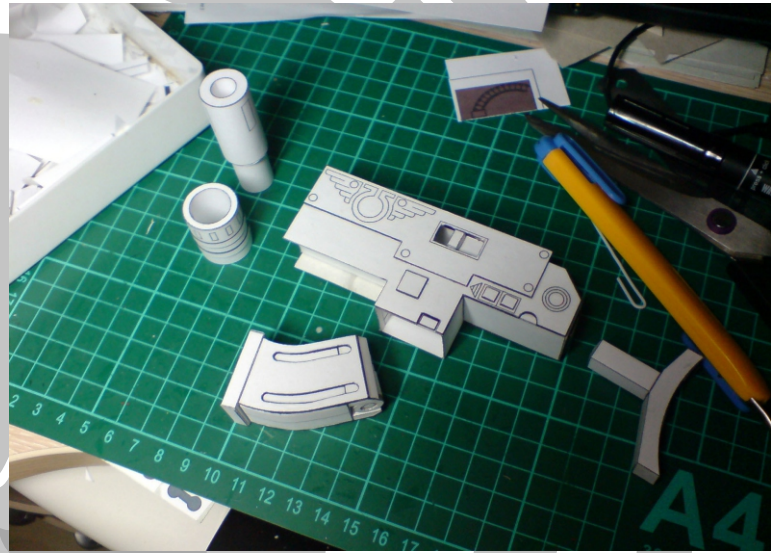
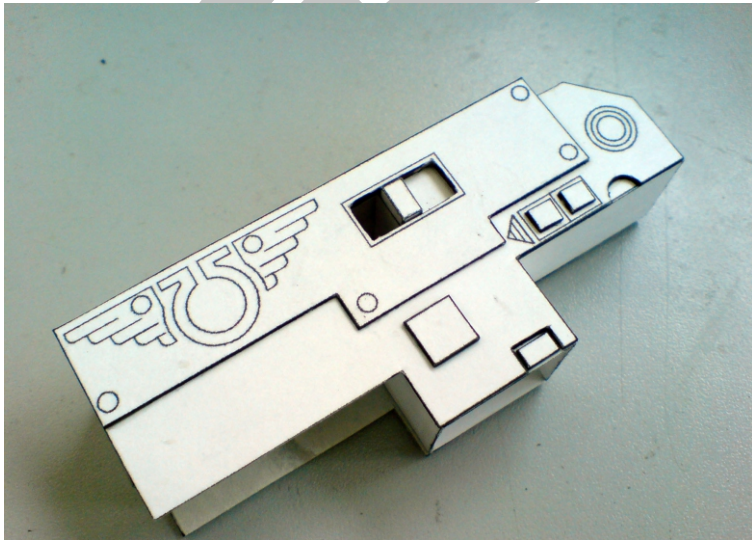
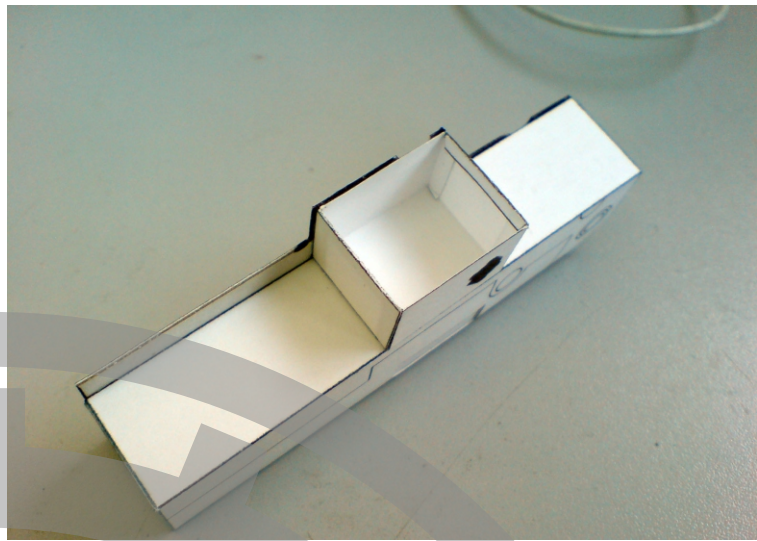
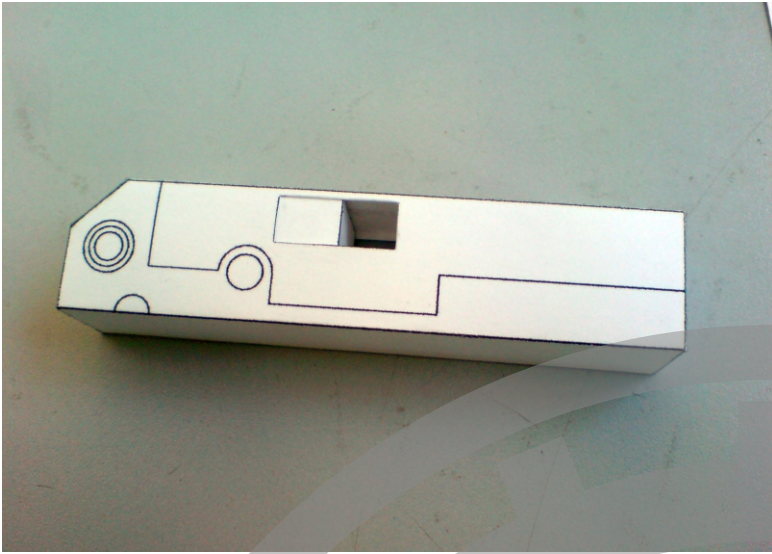
BOLTER

Mr5 G

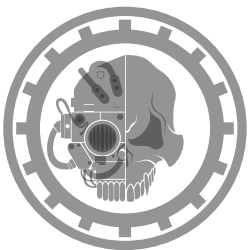


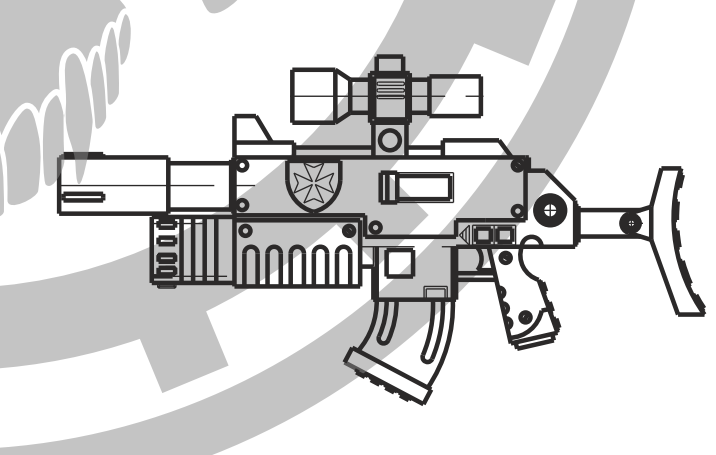
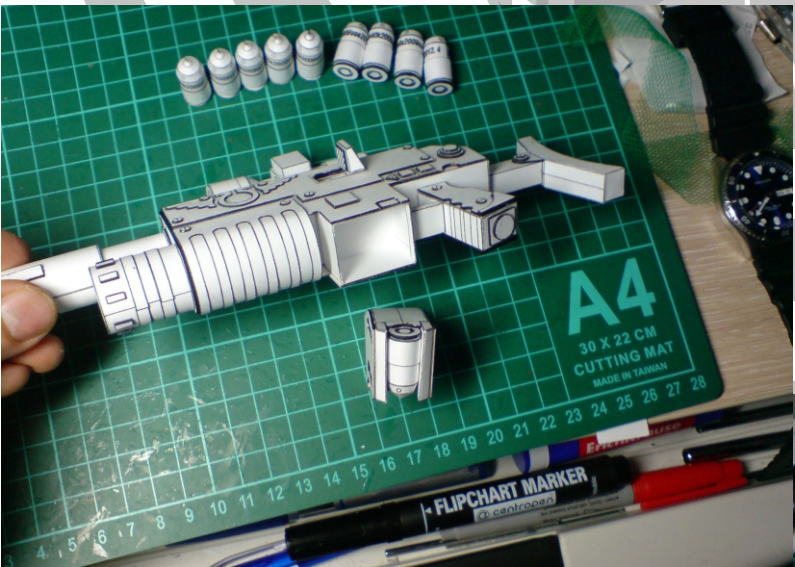
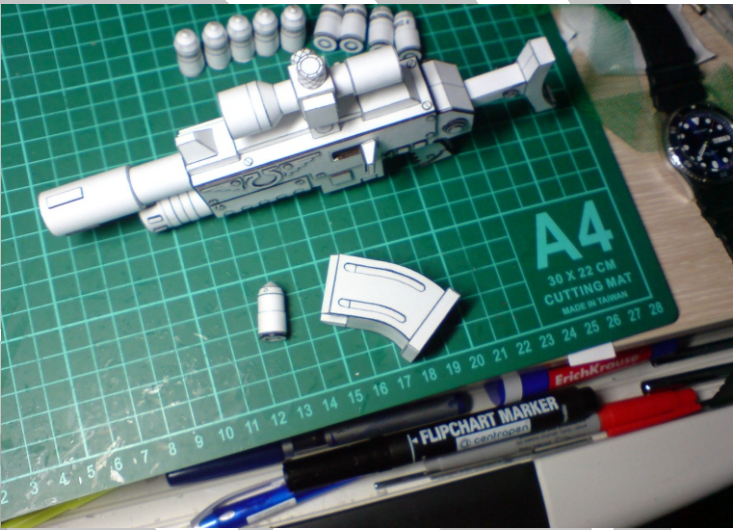
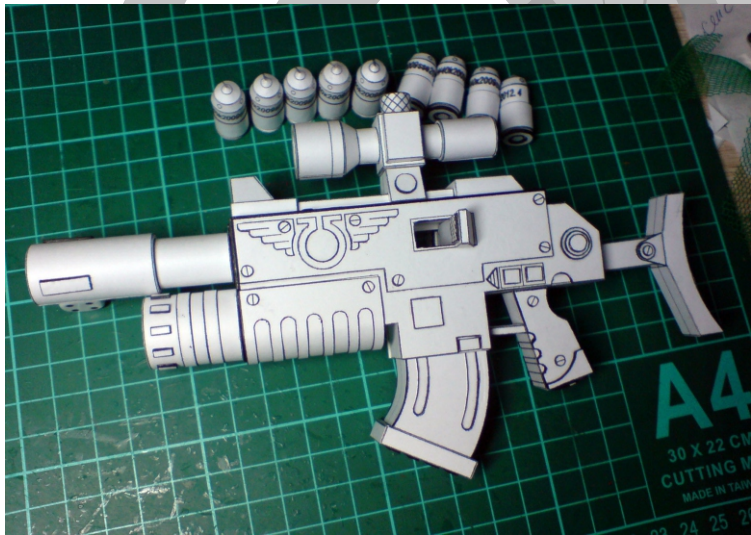
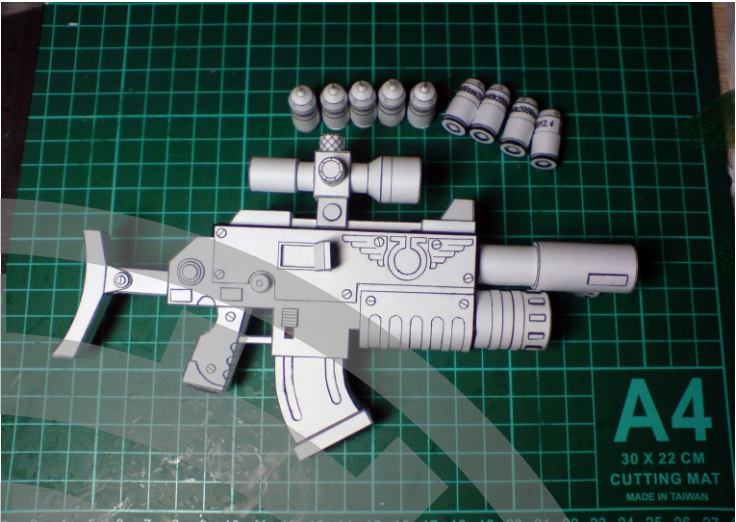
SSE2009



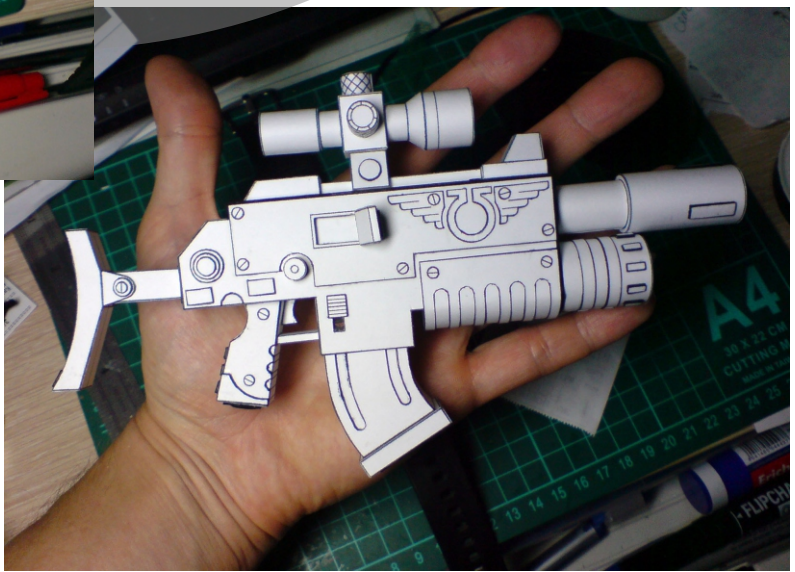
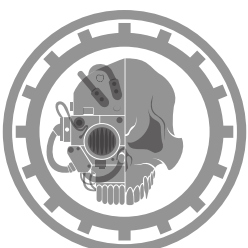


SSE2009

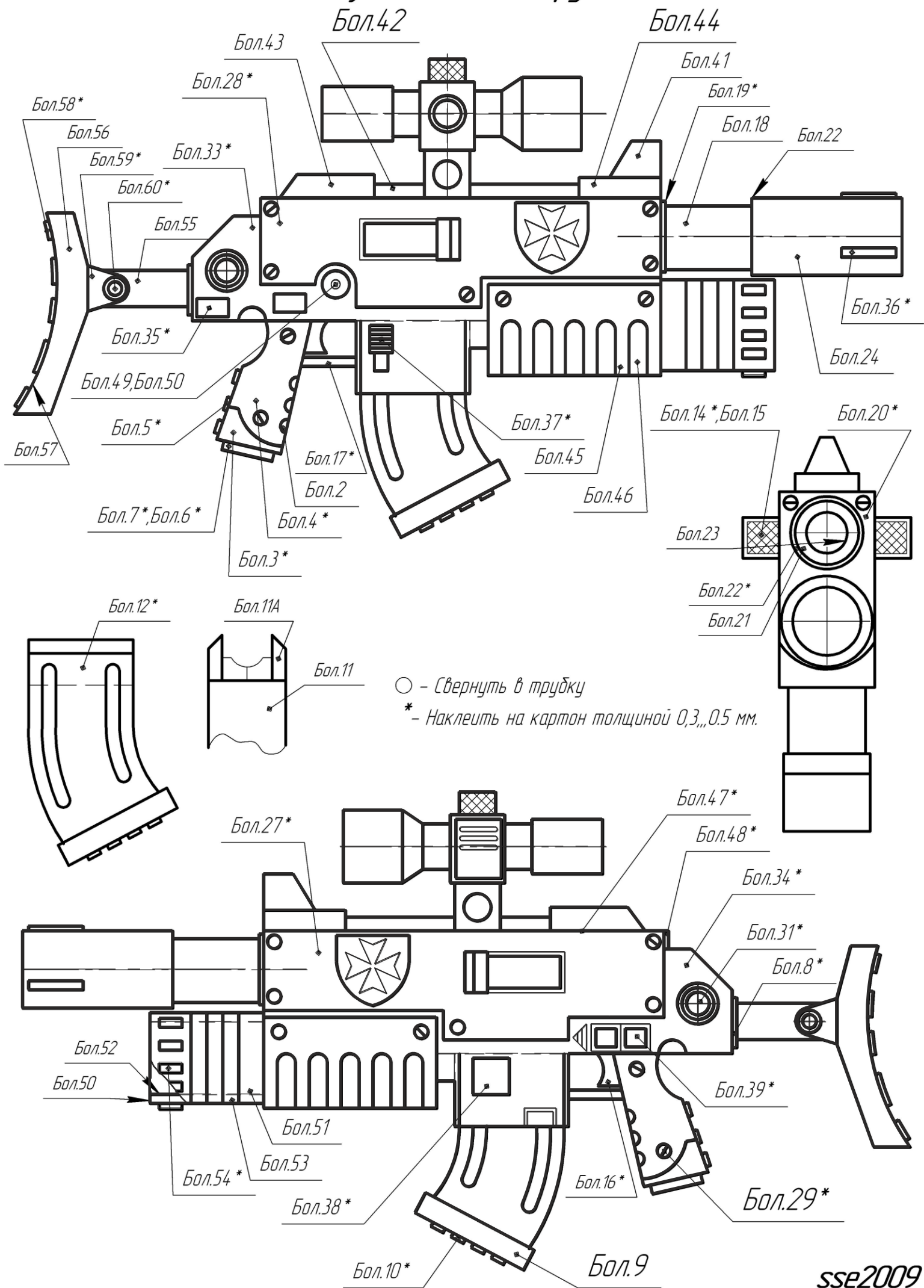




SSE2009

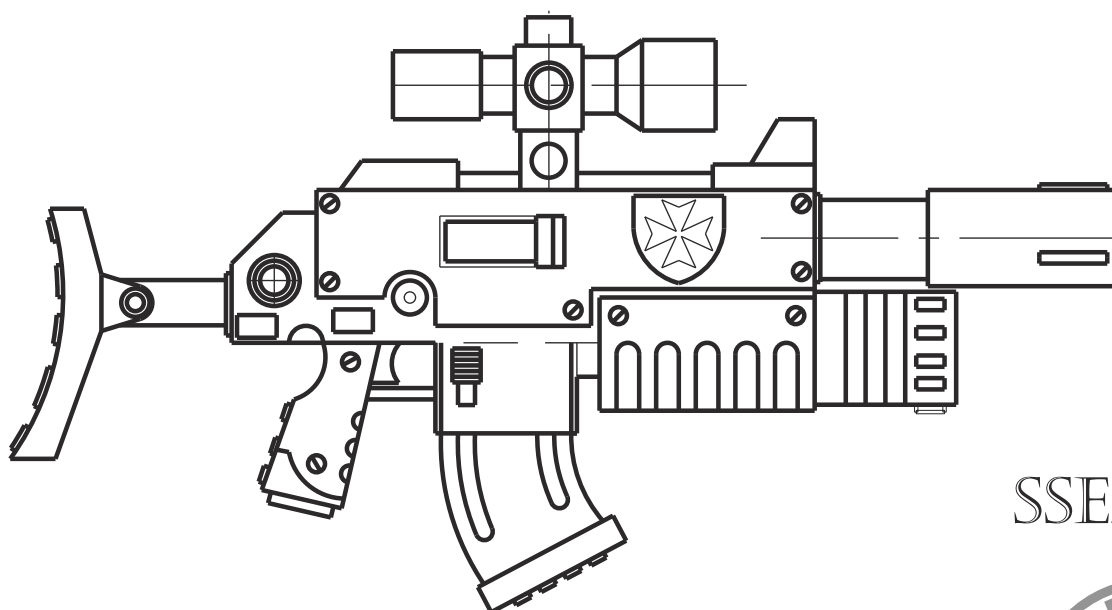
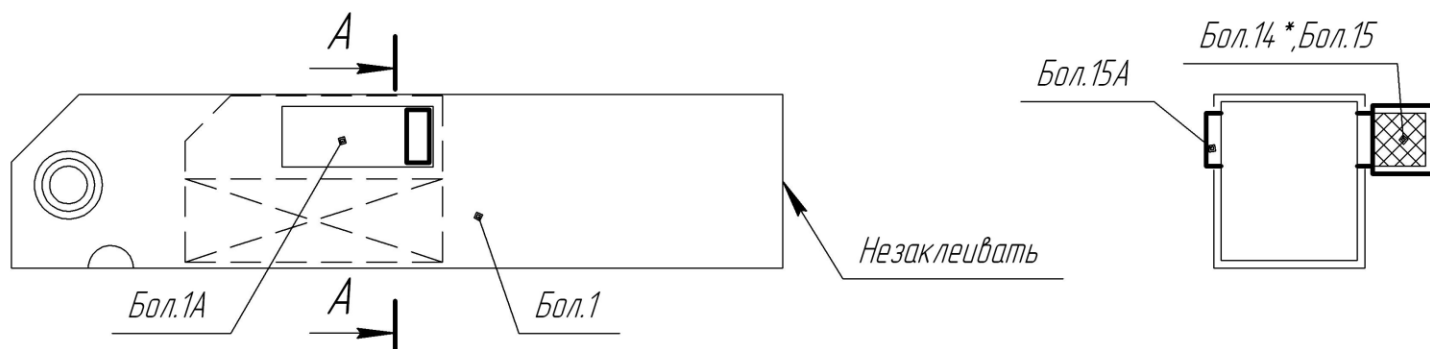


Bolter Astartes MK Vb; Godwyn Pattern Инструкция (Остальное см. Фото)

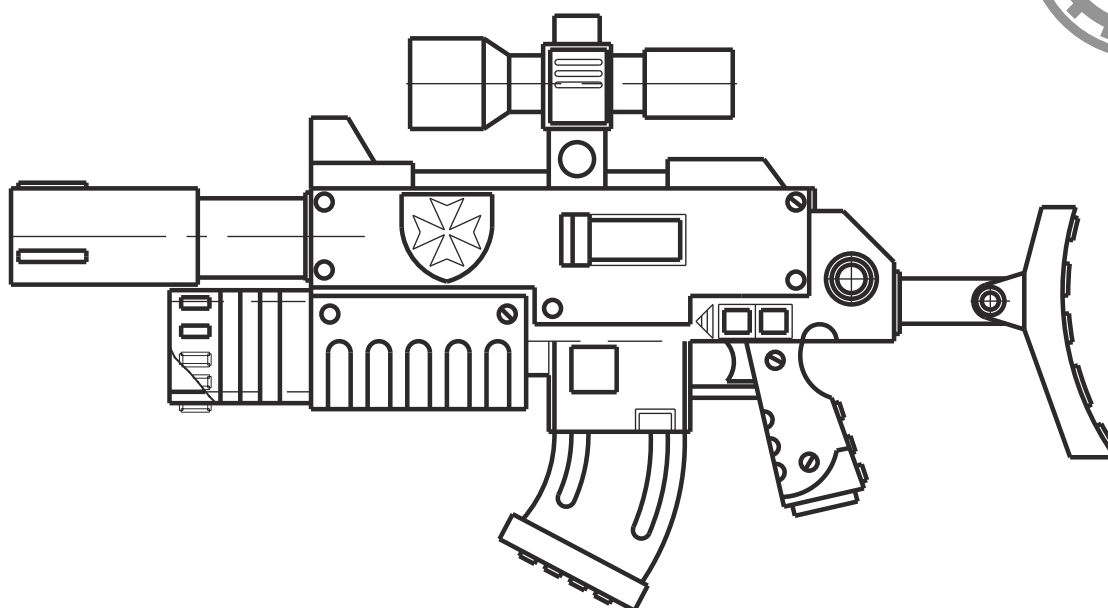
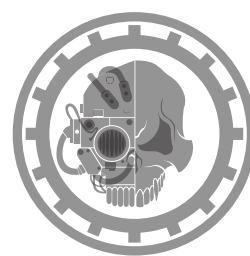


Последовательность сборки

1. собрать вместе дет. Бол.21 и Бол.23 и только потом приклеить к дет. Бол.24.
2. собрать вместе дет. Бол.50 и Бол.52 и только потом приклеить к дет. Бол.51.
3. Сборка подвижного затвора
Собрать деталь Бол.1А.
Собрать деталь Бол.1 (вырезать окна для выброса гильз) не заклеивая торец.
Вставить дет.Бол1А в Бол.1 и заклеить торец.

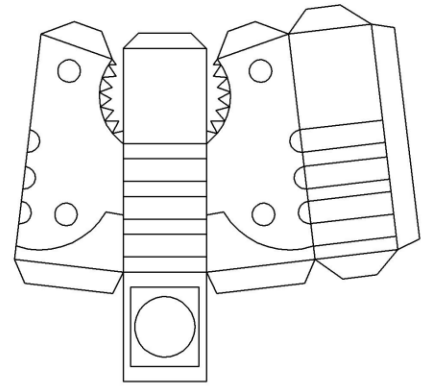


SSE2009



Bolter Astartes MK Vb; Godwyn Pattern Лист 1

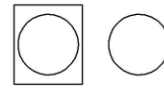
Бол.2



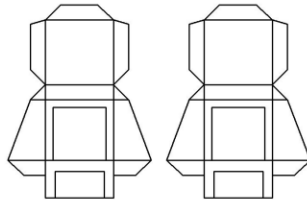
Бол.5*



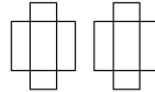
Бол.6* Бол.7*



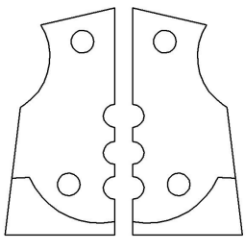
Бол.15



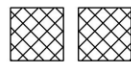
Бол.15А



Бол.4*



Бол.14*



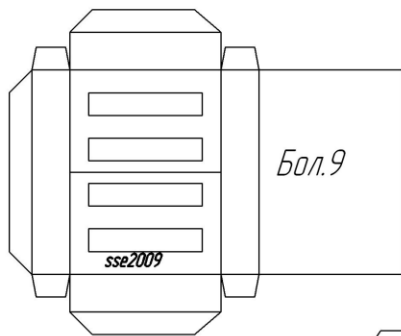
Бол.3*



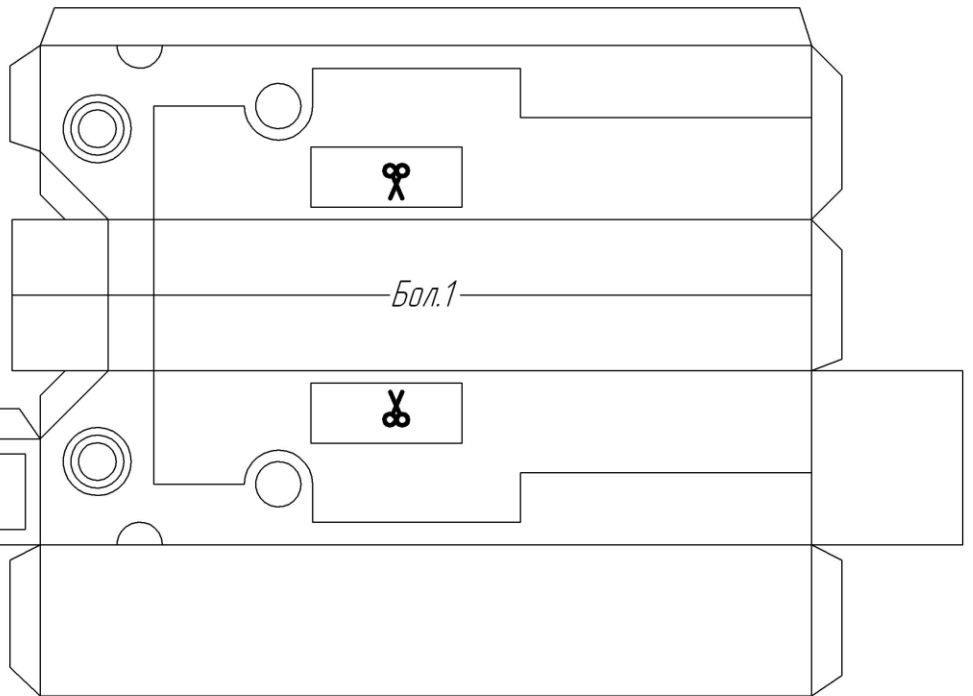
Бол.10*



Бол.9



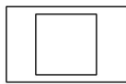
Бол.1



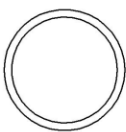
Бол.16*



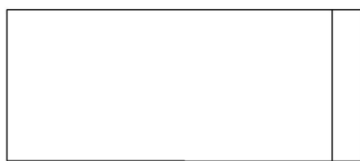
Бол.8*



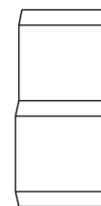
Бол.19*



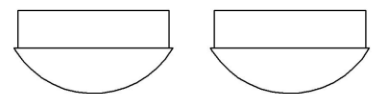
Бол.18



Бол.17

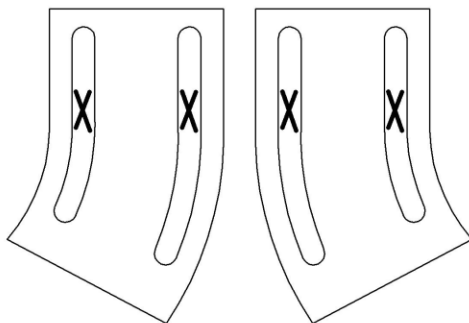


Бол.26*

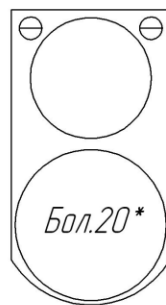


Бол.13*

Бол.12*



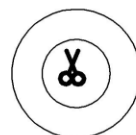
Бол.20*



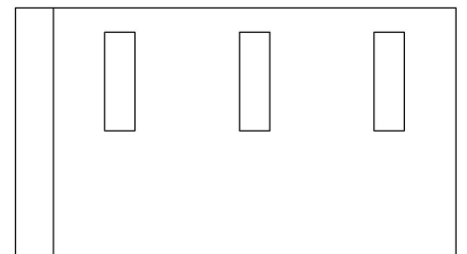
Бол.11Б*



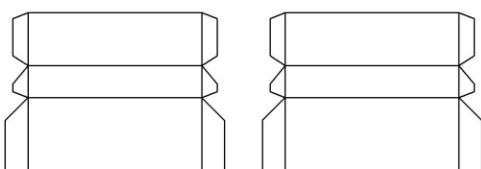
Бол.21



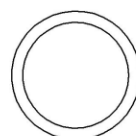
Бол.24○



Бол.11А



Бол.22



Бол.23○



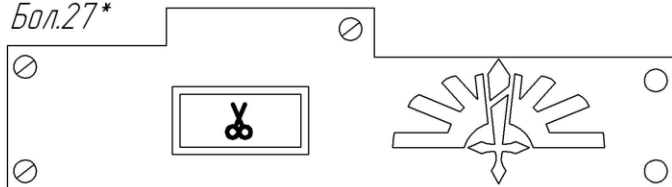
Бол.36*



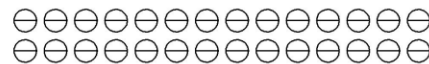
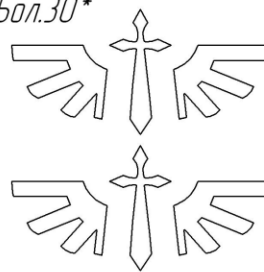
Bolter Astartes MK Vb; Godwyn Pattern Лист 2

Бол.29* (Клеить на БАТМАН)

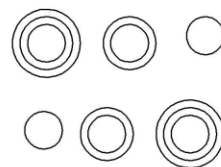
Бол.27*



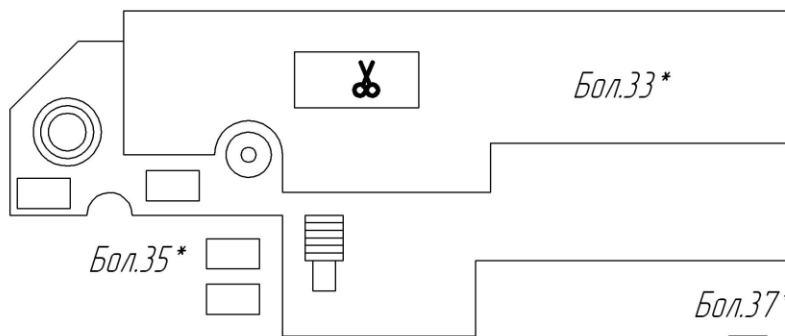
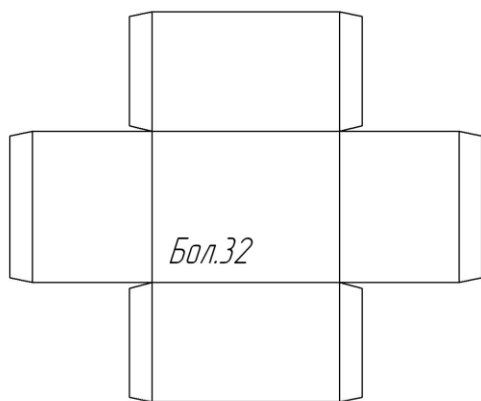
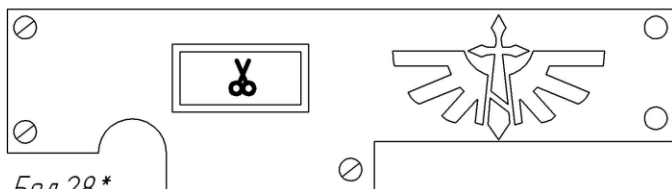
Бол.30*



Бол.31*

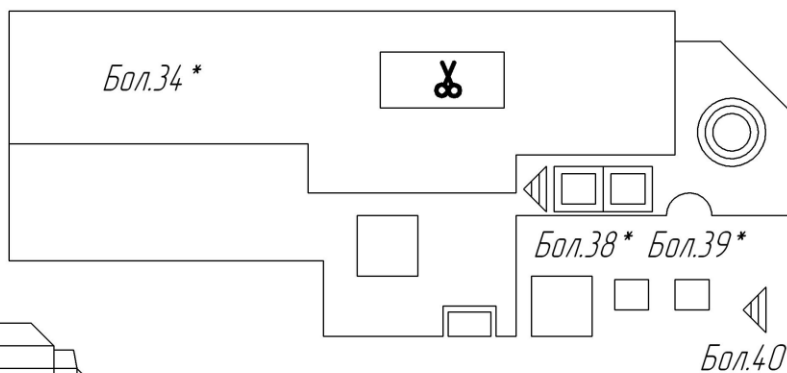


Бол.28*



Бол.35*

Бол.37*

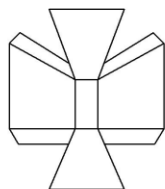


Бол.34*

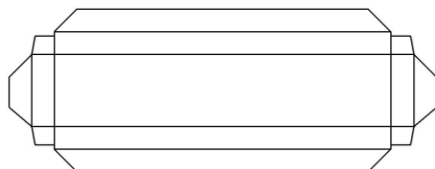
Бол.38* Бол.39*

Бол.40*

Бол.41



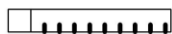
Бол.42



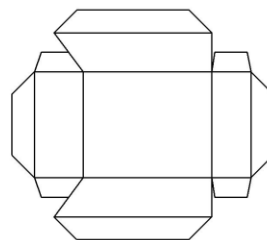
Бол.50



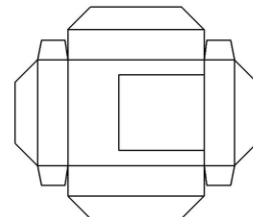
Бол.49



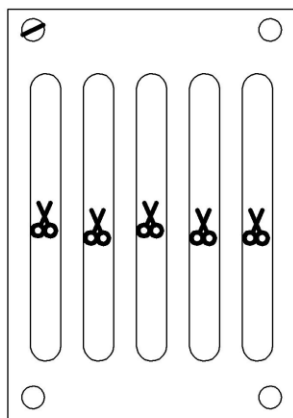
Бол.43



Бол.44



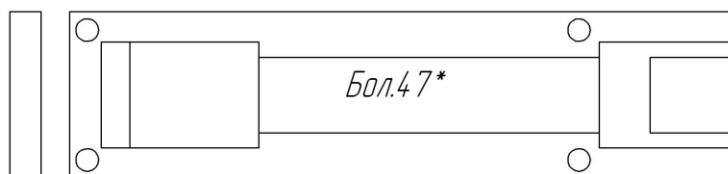
Бол.45



Бол.46



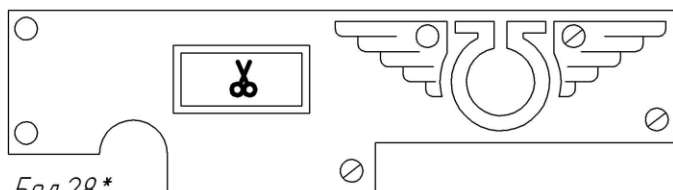
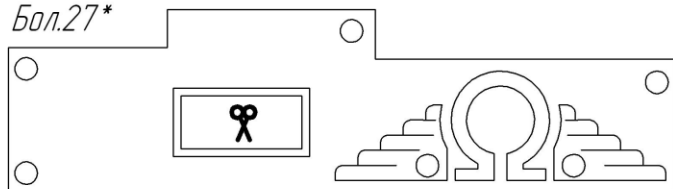
Бол.48*



Бол.47*

Bolter Astartes MK Vb; Godwyn Pattern Лист 3

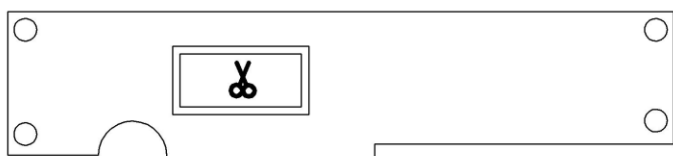
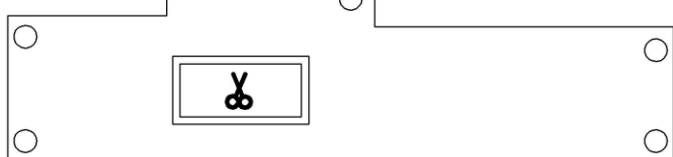
Бол.27*



Бол.28*

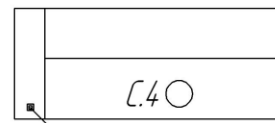
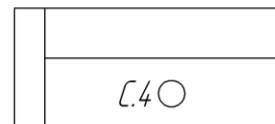
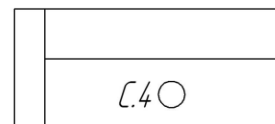
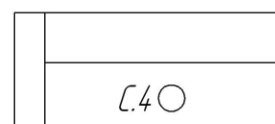
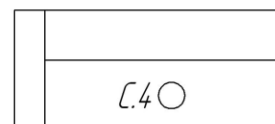
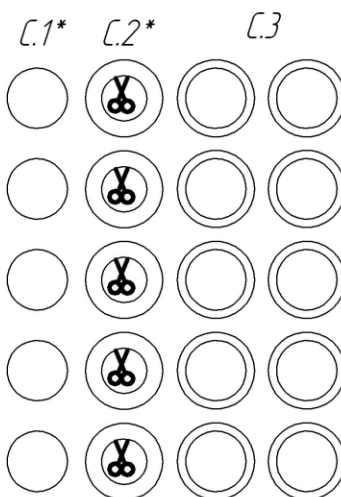
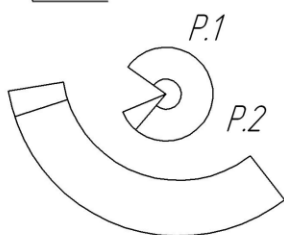
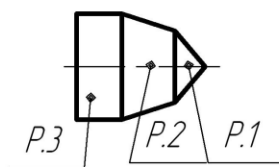
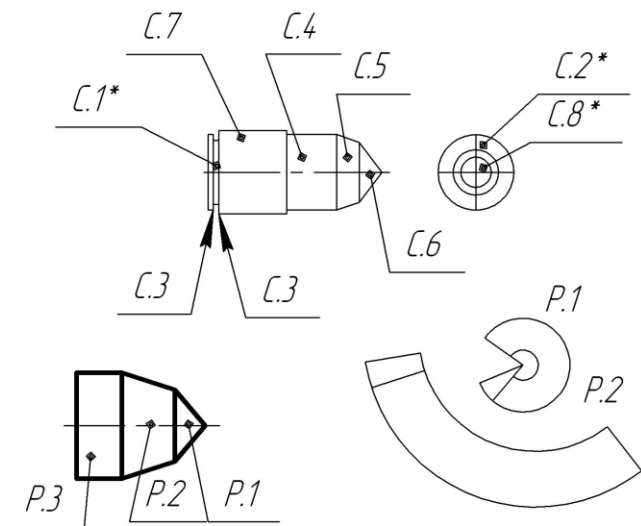
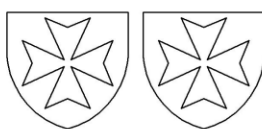
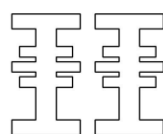
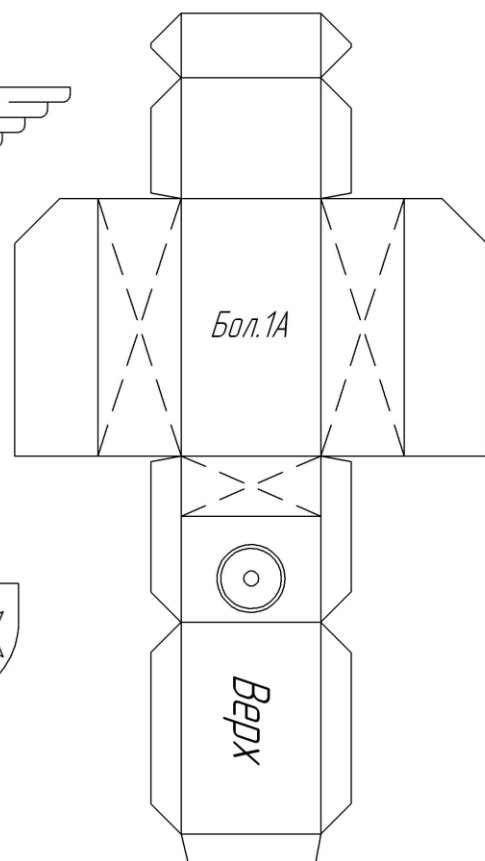
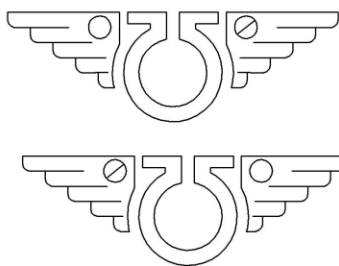
ВАРИАНТ

Бол.27*



Бол.28*

Бол.30*

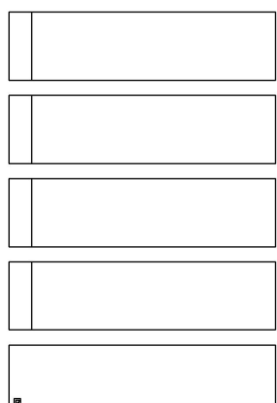


для магазина

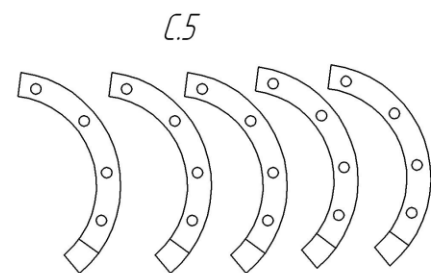
P.3O



C.7O



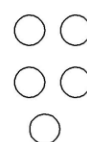
для магазина



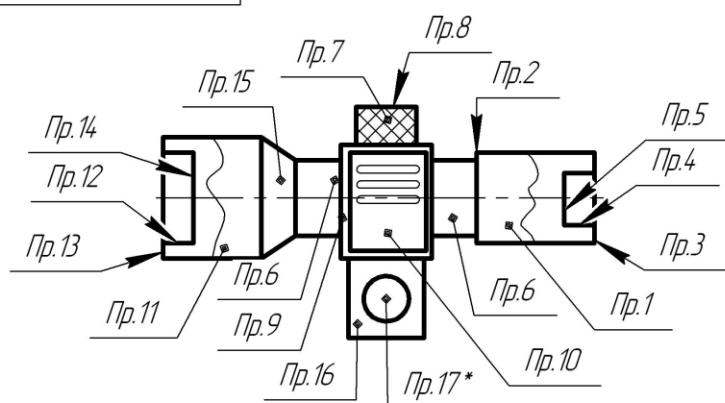
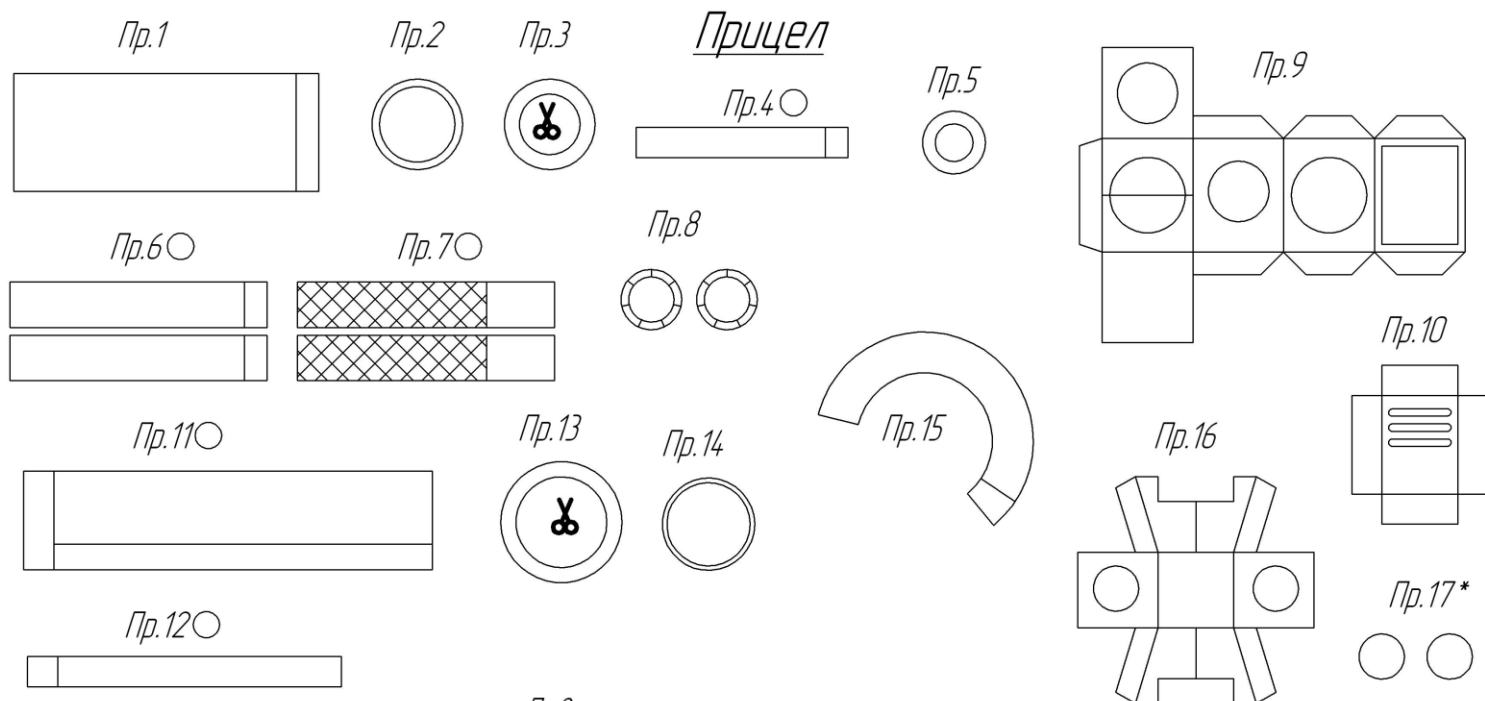
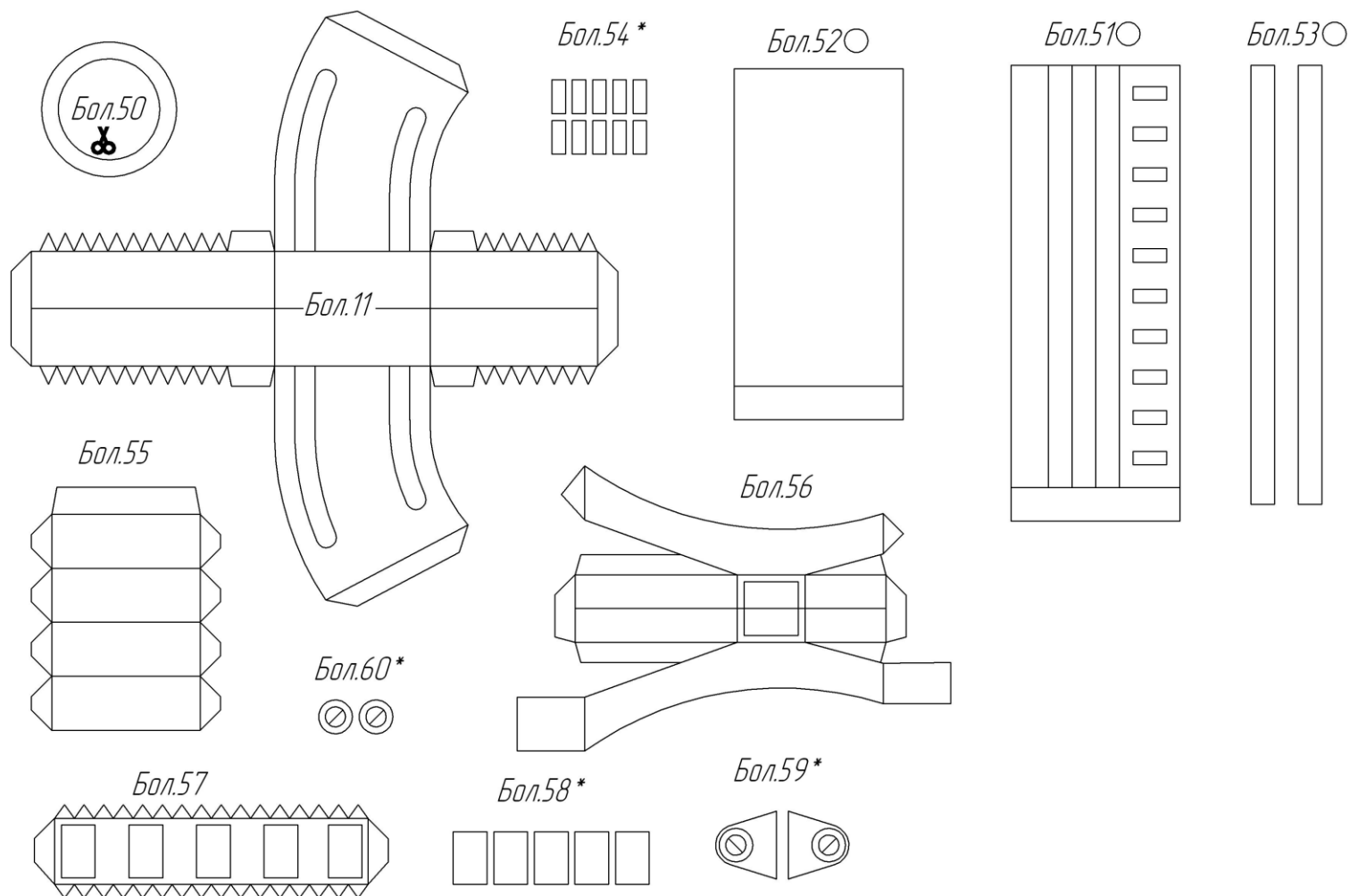
C.6



C.8*



Bolter Astartes MK Vb; Godwyn Pattern Лист 4



Последовательность сборки Прицела

1. собрать вместе дет. Пр.3,4 и 5 и только потом приклеить к дет. Пр.1
2. собрать вместе дет. Пр.12,13 и 14 и только потом приклеить к дет. Пр.11